

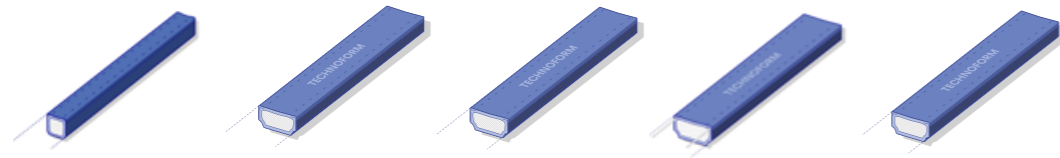
Colors and sizes

Spacers, connectors and muntin bar

Colors and sizes

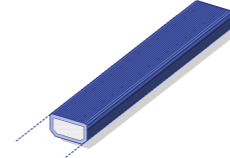
■ Produced in Singapore

Warm edge spacers



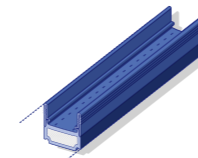
Width	SP12	SP13	SP14	SP18	SP19
Former product brand name*:	TGI-Spacer	TGI-Spacer M without wire	TGI-Spacer M with wire		
6.2 mm	■				
8 mm	■				
9 mm	■				
10 mm		■	■		■
11 mm		■	■		
12 mm		■	■	■	■
13 mm		■	■		
14 mm		■	■	■	■
15 mm		■	■	■	■
16 mm		■	■	■	■
17 mm			■		
18 mm		■	■	■	■
20 mm		■	■	■	■
22 mm		■	■		
24 mm		■	■		
26 mm		■	■		
28 mm			■		
30 mm		■	■		

High thermal performance spacer



SP16
TGI-Spacer Precision

Spacers for integral blinds



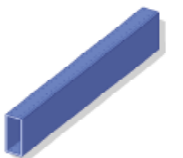
SP15
TGI-Spacer Pellini

Connectors



CN53	CN54
------	------

Muntin bar



Width	Height	MU10
-------	--------	------

9.5 mm	21.5 mm	■
9.5 mm	25.5 mm	■
9.5 mm	31.5 mm	■
11.5 mm	21.5 mm	■
11.5 mm	25.5 mm	■
11.5 mm	31.5 mm	■
13.5 mm	21.5 mm	■
13.5 mm	31.5 mm	■

- Similar to RAL 9016 White*
- Similar to RAL 7035 Light grey
- Similar to RAL 7040 Dark grey
- Similar to RAL 8003 Light brown*
- Similar to RAL 8016 Dark brown*
- Similar to RAL 9005 Black

Customized options can be produced according to your specification. Please contact us at info.tesg@ap.technoform.com

*We are Technoform, formerly known as TGI. We are transitioning all our existing products and their brand names to article IDs.